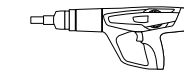
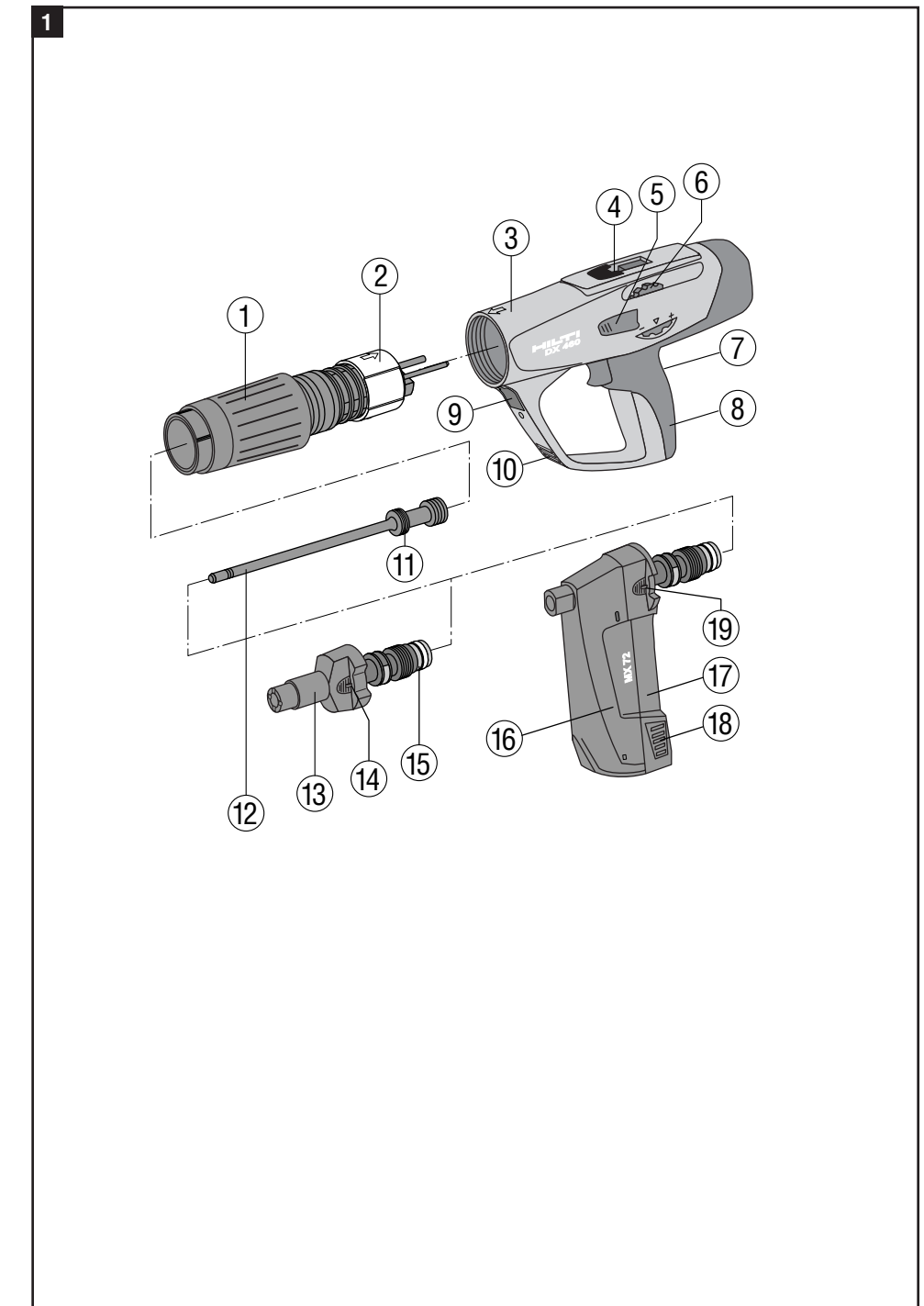


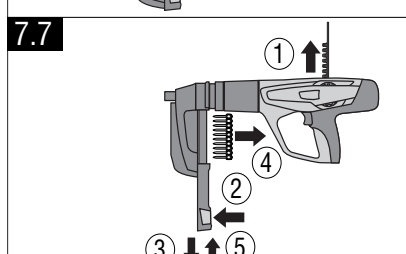
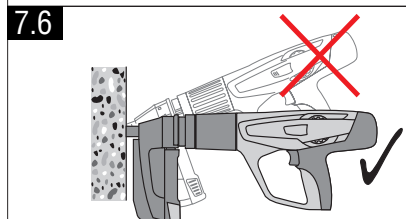
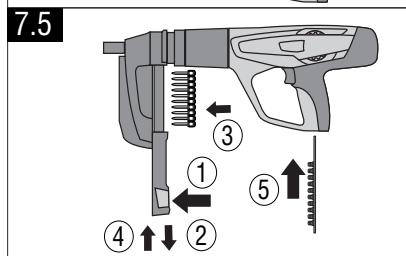
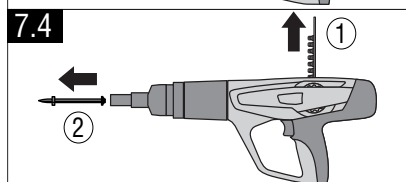
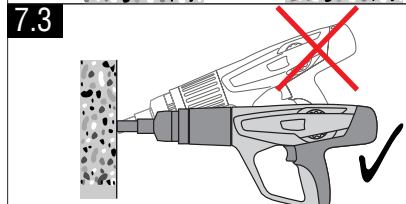
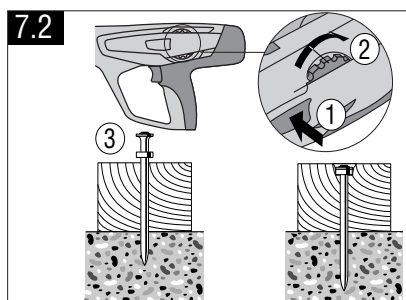
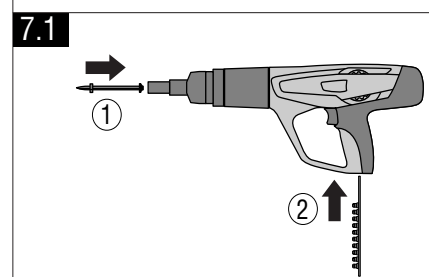
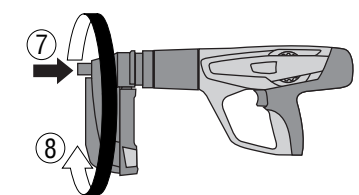
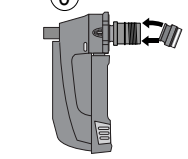
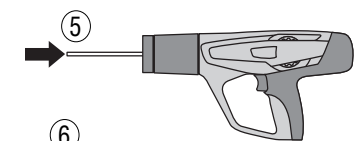
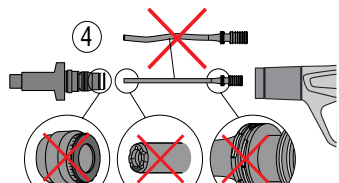
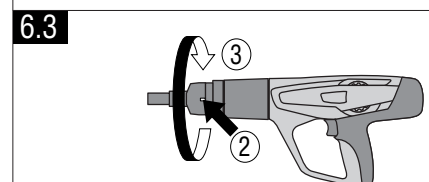
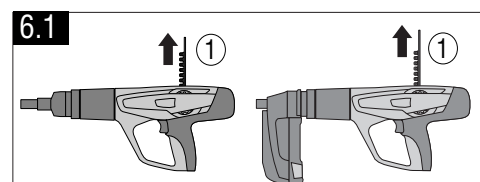
DX 460



Hilti Corporation
 FL-9494 Schaan
 Tel.: +423/234 21 11
 Fax: +423/234 29 65
 www.hilti.com

en	Operating instructions	1–17
fr	Mode d'emploi	19–35
nl	Gebruiksaanwijzing	37–53
da	Brugsanvisning	55–72
fi	Käyttöohje	73–89
no	Bruksanvisning	91–106
sv	Bruksanvisning	107–123
ru	Инструкция по эксплуатации	125–141
et	Kasutusjuhend	143–159





	XMx72	X-460-F8	X-460-F8N15	X-460-F8N10	X-460-F8S12	X-460-F8SS	X-460-F10	X-460-F810SS	X-460-F1E
X-DNI	S/W	S/W	S/W	S/W	S				
X-ZF	S/W	S/W	S/W	S/W					
X-SL	S/W	S/W	S/W	S/W					
X-EDNI	S	S	S	S					
X-CR		S	S	S					
X-DAK	S	S	S	S					
X-AL-H		AL	AL	AL					
X-FS	S/W	S/W							
X-SW	S/W	S/W							
X-M8/X-W8 ... P8		S				S			
X-M6/W6 ... P8		S				S			
X-M10/W10 ... P10							10	10	
X-IE									IE, IEA

S = X-460-P8
 W = X-460-P8W
 AL = X-460-P8AL
 10 = X-460-P10
 IE = X-460-PIE
 IEA = X-460-PIEA

